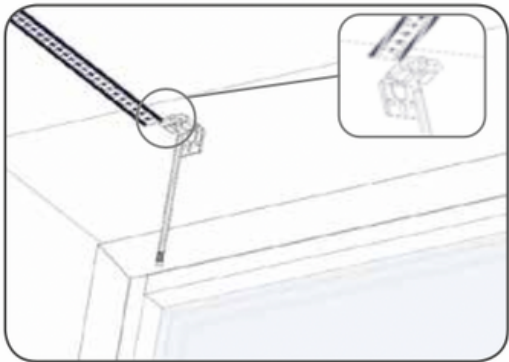


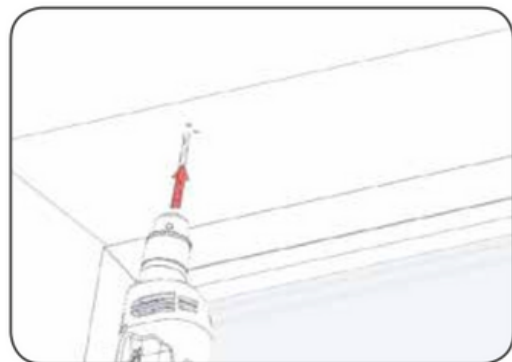
How to Fit

An Elevate Blind

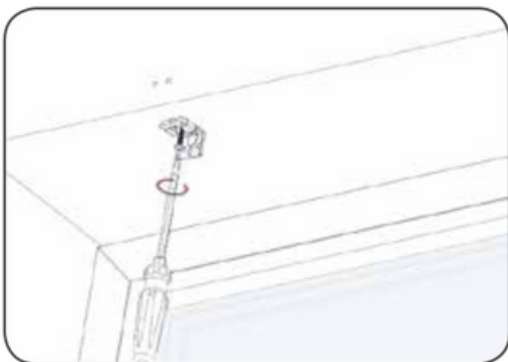
TOP FIX



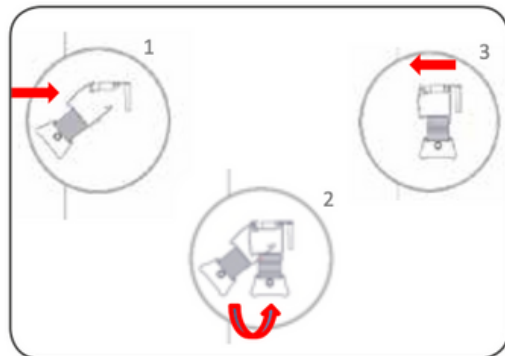
1. Position brackets a minimum of 12mm from the front of the recess, mark through centre hole. Ensure brackets are not fitted directly above internal components as this can impede the rotation of the cord drums which will impact operation of the blind.



2. Using your mark as a guide. Drill into the frame. Repeat this process for all brackets.

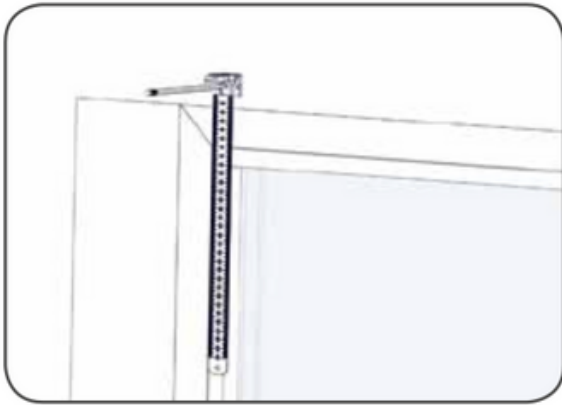


3. Use a screwdriver fit all brackets.

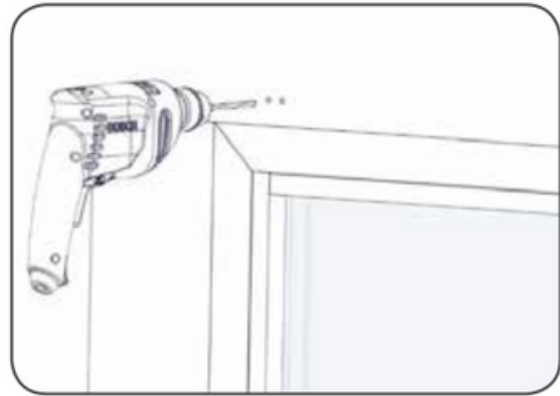


4. Fit blind to brackets by first locating front ledge on plastic part of bracket (1), then compress springs by pushing rail away from you as back edge of rail is rotated up towards brackets (2). Once flush against brackets rail should release to engage back ledge on brackets (3).

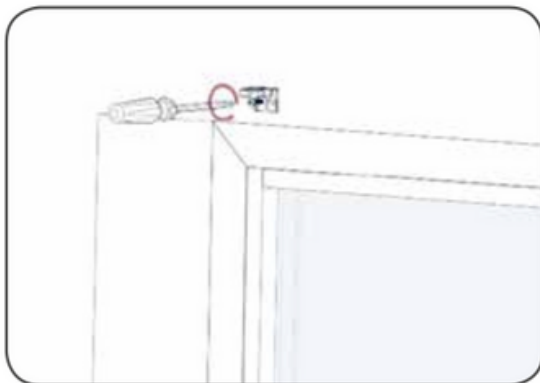
FACE FIX



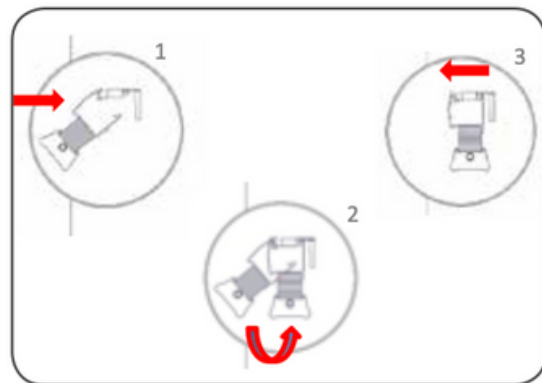
1. Position bracket on face at a height where measurement has been taken from. Mark through 2 x holes in bracket (using centre slot allows some adjustment). Ensure brackets are not fitted directly above internal components as this can impede the rotation of the cord drums which will impact operation of the blind.



2. Using your mark as a guide. Drill into the frame. Repeat this process for all brackets.



3. Use a screwdriver fit all brackets.



4. Fit blind to brackets by first locating front ledge on plastic part of bracket (1), then compress springs by pushing rail away from you as back edge of rail is rotated up towards brackets (2). Once flush against brackets rail should release to engage back ledge on brackets (3).

INITIAL SET UP

1. To start you will need an installed motorised blind, remote control and push pin/paper clip/pen. For installation, please follow Powershade Information Pack. 2. Make sure that the motor is connected to a battery source.

LINK REMOTE TO MOTOR

3. To link the remote control to the motor, first remove the back cover of the remote control to expose the additional buttons underneath.

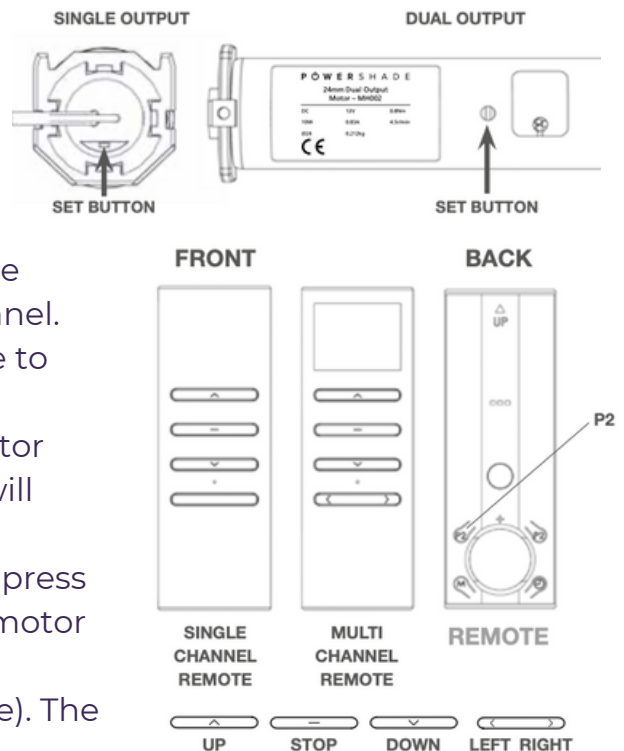
4. If using a multi-channel remote, select the desired channel. Use buttons to select channel. If not using multi-channel remote, continue to step 5.

5. Press and hold the SET button on the motor using a push pin for 3 seconds. The motor will JOG in response.

6. Within 3 seconds of pressing SET button, press "P2" button (on rear of remote) ONCE. The motor will JOG in response.

7. Press "P2" button again (on rear of remote). The motor will again JOG in response.

8. Now press button (on front of remote). The motor will JOG in response. The remote is now linked and ready to be set.



CHANGE MOTOR DIRECTION

9. Check whether the motor is turning in the correct direction. To do this, press the

control. If the blind moves down, the motor direction does not to be adjusted. If pressing the button raises the blind, you need to adjust the motor direction.

10. To change the motor direction, press and hold SET button on the motor for 6 seconds. The motor will JOG TWICE to confirm change. Check the blind is now moving in the correct direction for the arrows. If not, please repeat step 10.

SET UPPER LEVEL

11. Press "P2" button (on rear of remote) once. The motor will JOG in response.

12. Press button (on front of remote) once. The motor will JOG in response. button on the remote


13. Press "P2" button (on rear of remote) once. The motor will JOG in response. The motor is now in limit setting mode.

14. Press button (on front of remote) once. The blind will begin to rise. When the blind reaches the preferred upper limit, press button (on front of remote) ONCE.

15. To confirm location of upper limit, press and hold button (on front of remote) until the motor JOGS in response. This concludes the upper level setting.

SET LOWER LEVEL

16. Press  button on the remote control. The blind will begin to lower. When the blind reaches preferred lower limit, press  button.

17. To confirm location of lower limit, press and hold  button until the motor JOGS in response. This concludes the lower level setting.

SET MID LEVEL



(Commonly used to set open position on Venetian Blinds)

18. To set a mid limit, run the blind to the desired position using the   buttons on the remote control.

19. Press  button at desired limit position. The blind will **STOP**.

20. Press "P2" button (on rear of remote). The motor will **JOG** in response.

21. Press  button. The motor will **JOG** in response.

22. Wait 2 seconds, then press  button again. The motor will **JOG** in response. The mid level is now set. To reach the mid limit, press and hold the  button. The motor has now exited **LEVEL SETTING MODE**.

DISCONNECT REMOTE FROM MOTOR

23. Press "P2" button (on rear of remote). The motor will **JOG** in response.

24. Press  button. The motor will **JOG** in response.

25. Press "P2" button (on rear of remote). The motor will **JOG** in response. The remote has now been successfully disconnected from the motor.

SINGLE CHANNEL GROUPING

(To operate several blinds at once and NOT retain individual control))

- Follow steps 1-22 for motor one. Then disconnect battery from motor one.

- Now follow steps 1-22 for motor two.

- If more motors are to be grouped on this channel, continue to disconnect battery after programming and follow steps 1-22 for each motor.



- When all motors are programmed, re-connect each battery and all should work from the same channel.

- Once you have grouped all your blinds, using the  or 

buttons on your remote control will operate all selected blinds together. The individual limit presets of each blind will be retained.

MULTI CHANNEL GROUPING

(To operate several blinds at once and retain individual control))

- Follow steps 1-22 for motor one - using channel one on multichannel remote
- Follow steps 1-22 for motor two - using channel two on multichannel remote.
- To operate both motors from another channel (retaining individual control):
 - Select first blind channel you desire to group
 - Press "P2" button (on rear of remote). The motor will jog in response.
 - Press "P2" button again. The motor will jog in response.
 - Select chosen grouping channel
 - Press "P2" button again. The motor will jog in response.
 - Repeat for the rest of your blinds.
 - Once you have grouped all your blinds, using the  or  buttons on your remote control will operate all selected blinds together. The individual limit presets of each blind will be retained

CHARGING INSTRUCTIONS FOR MH032/MH038:

1. After installation, the Rechargeable battery will require a full charge.
2. Connect the charger (MH033), and charge the battery for 5-6 hours.
3. The charger light will turn from **RED** to **GREEN** when charged. When the light turns green we recommend charging for a further hour to ensure a full charge.
4. Your blind battery requires charging approximately every 5 months*. When your blind starts to run slowly, the battery needs to be charged.

** This can vary depending on size of the blind, weight of the fabric and the amount of usage.*

TIP: Ensure motor is charged for approximately 30 minutes prior to install, ensuring enough charge for programming.